

BLAC-RAC[®]

WEAPON RETENTION SYSTEMS



Operation Manual

Model 1070





Section 1
1070 Parts Diagram

Section 2
Removal of Top Security Plate



Section 3
Removal/Adjustment of Yoke

Section 4
Tube Mount Installation

Section 5
Mounting **BLAC-RAC** to Tube Mount



Section 6
Mounting **BLAC-RAC** to T-Channel

Section 7
Adjustment of Breech Width




Section 8
Adjustment of Eccentric Pistol Grip Rest

Section 9
Trigger Guard Installation

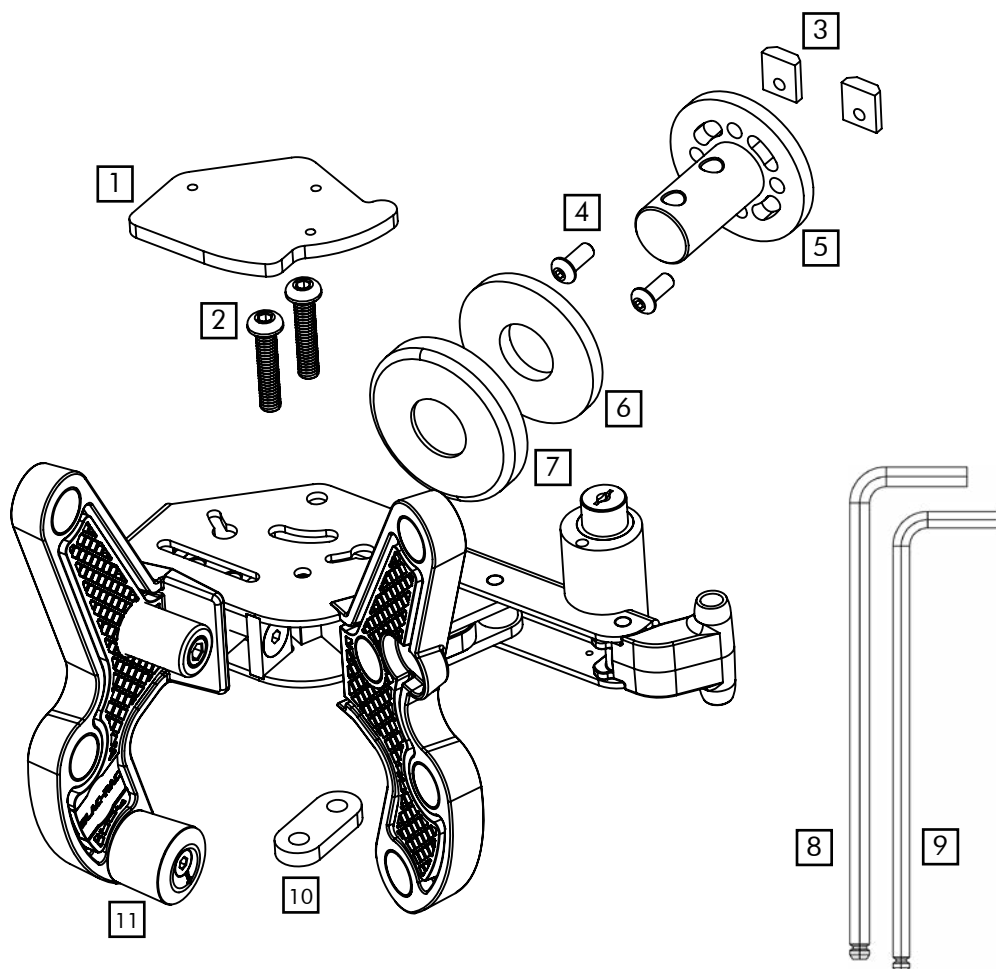
Section 10
Conventional Stock Adapter Installation

Contact

208.855.9388
info@blac-rac.com



SECTION 1 | Parts Diagram



1	Security Cover
2	x2 Mounting Bolts 5/16-18 x 1 1/2" Button Head Bolt
3	x2 T-Nut
4	x2 Yoke Bolts 1/4-20 x 5/8" Button Head Bolt
5	Yoke
6	Yoke Vibration Pad
7	Yoke Security Cover
8	3/16" Wrench
9	5/32" Wrench
10	Double Nut
11	Eccentric Pistol Grip Rest

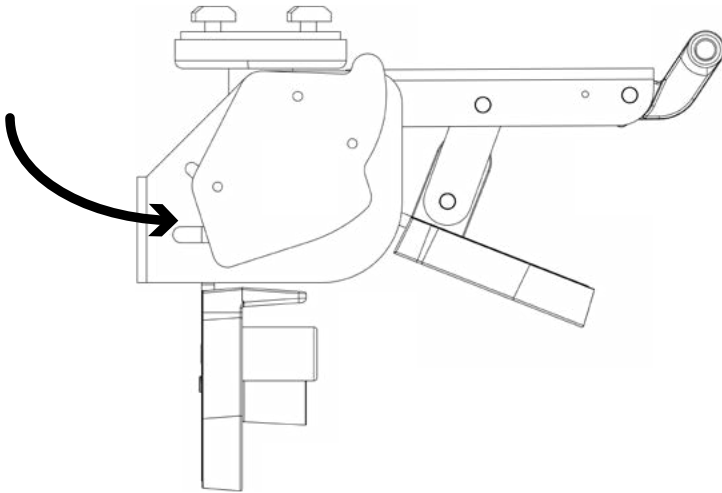
IMPORTANT

Look at the bottom of each page for installation videos; which can be found on our website blac-rac.com/instructions or by searching via YouTube

SECTION 2 | Removal of Security Cover

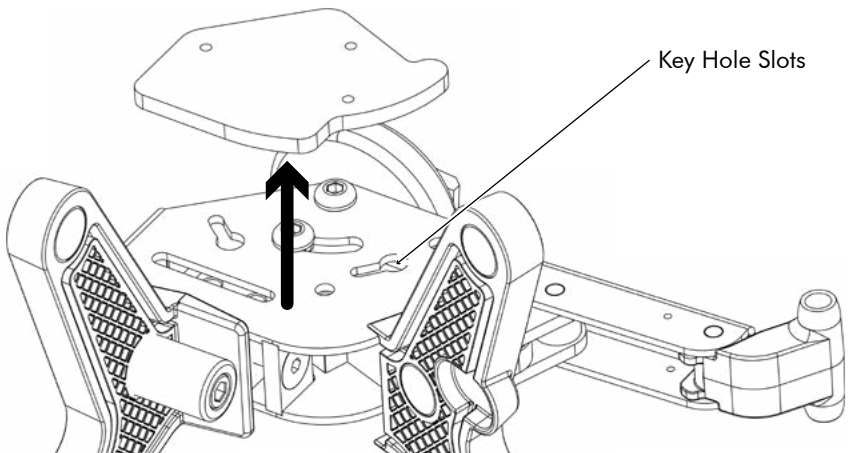
[1] Unlock the BLAC-RAC and swing the handle to its full open position

[2] Slide the Security Cover, counter clockwise towards the open handle as far as it will go. Sometimes the plate may be hard to rotate, tapping with a rubber hammer will help loosen it.



[3] Lift the Security Cover straight up and separate it from the unit

[4] To reinstall align bolts attached to the plate with the Key Hole Slots and reverse operation before mentioned.

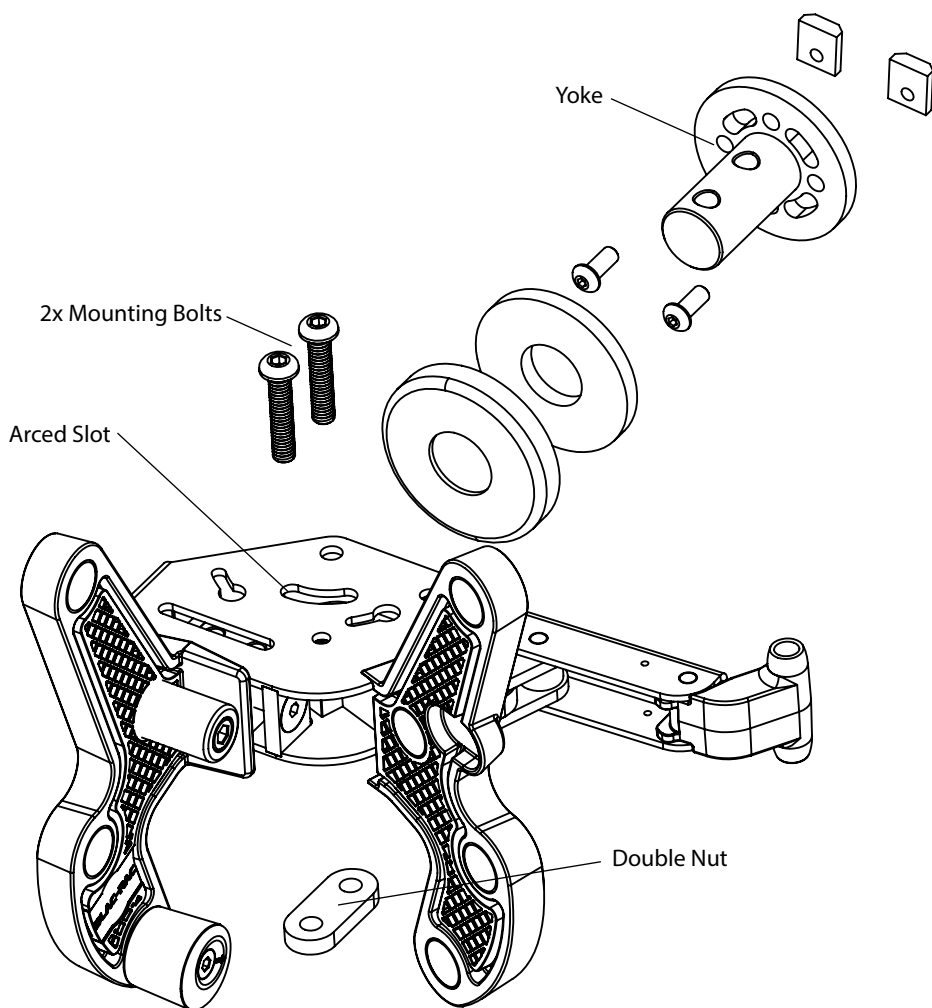


SECTION 3

Removal/Adjustment of Yoke

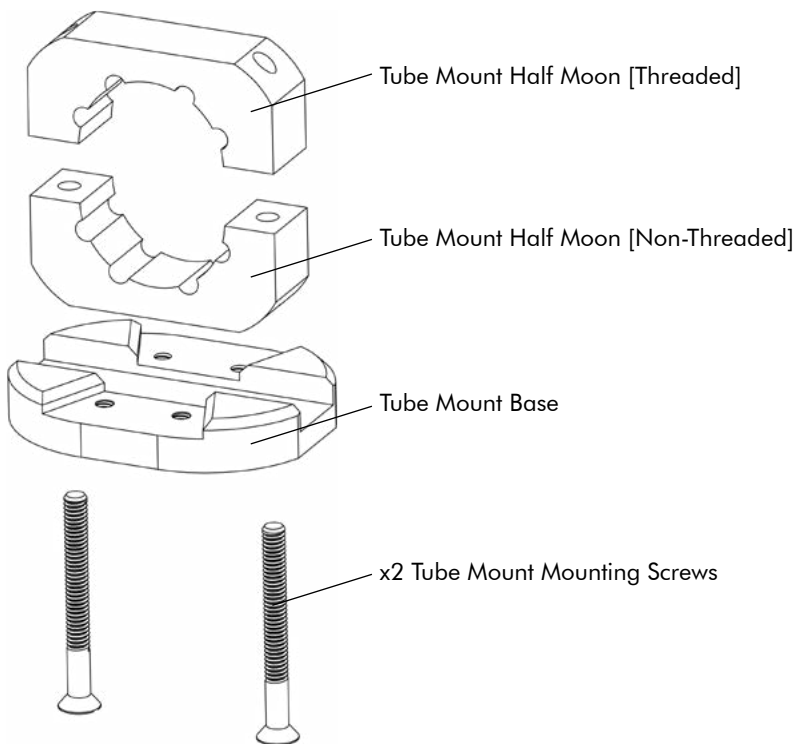
The design of the BLAC-RAC allows it be installed with up to a 45° angle from center. One of the mounting bolts is inserted through the arced slot. This slot allows for proper positioning depending on the application.

[1] Remove the two mounting bolts using the supplied 3/16" allen wrench. On the bottom side of the unit, there is a double nut, which secures the yoke to the unit. As you remove the mounting bolts, the double nut may fall free.



[2] Remove the yoke by pulling straight out from the unit. Remove the yoke security cover and the yoke vibration pad to access the yoke bolts. Retain for re-installation.

SECTION 4 | Tube Mount Installation

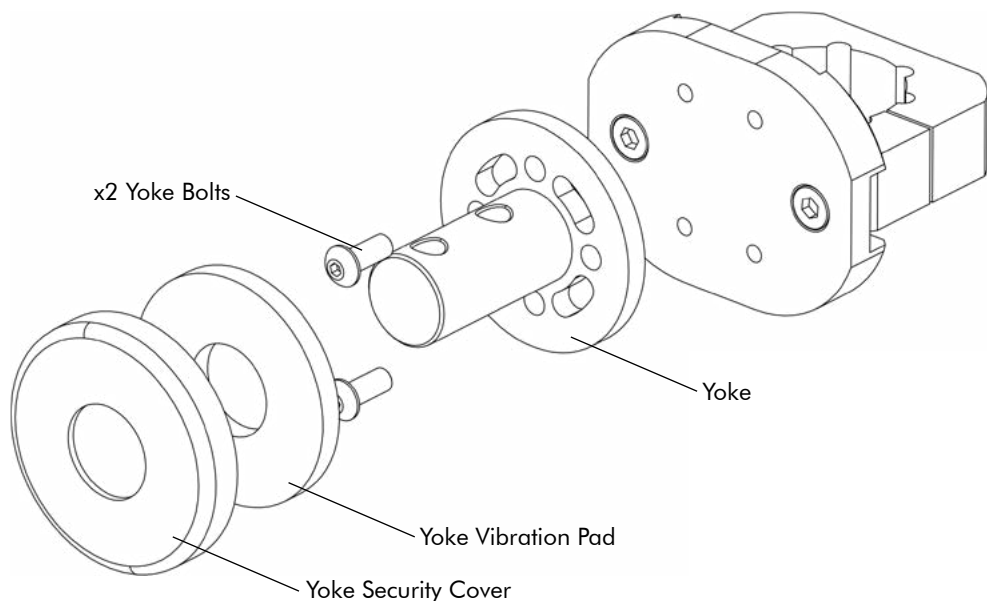


[1] The tube mount must be disassembled prior to installation. Disassemble by removing the two screws using a 5/32" allen wrench.

[2] Place the non-threaded half on the side of the tube the BLAC-RAC will be installed. Install the base on to the non-threaded side until the two holes align with the holes in the threaded side. Insert the two screws and hand tighten as snug as possible. Using a torque wrench, incrementally tighten to 5-7 foot pounds ensuring the gap on each side is equal.

SECTION 5

Mounting **BLAC-RAC** to Tube Mount



[1] Apply threadlocking fluid to the two yoke bolts and attach it to the mount base. Use whichever bolt pattern fits your application. Torque to 7 - 10 foot pounds.

Note: Orientation of the two through holes in the yoke will typically run parallel to the roll bar or tubing. However, you may orient the Yoke to best serve your desired application.

[2] Place the yoke vibration pad followed by the yoke security cover over the yoke.

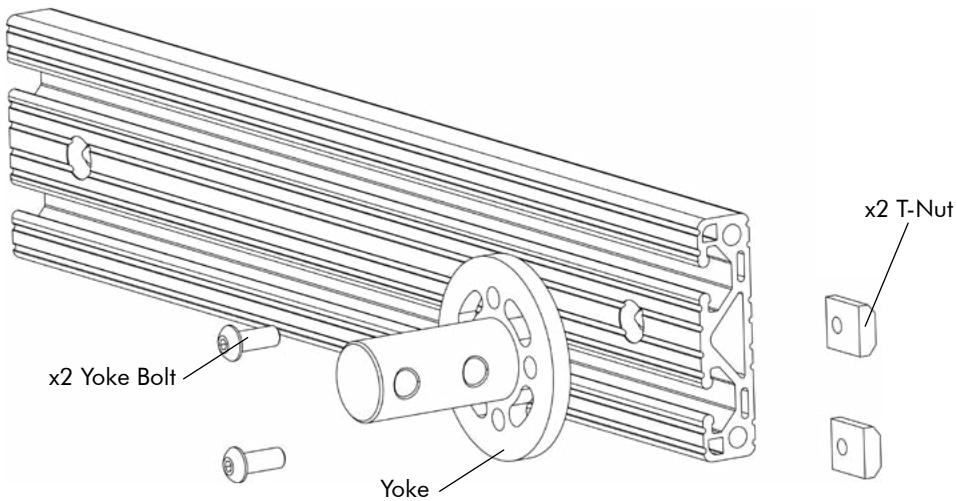
[3] Place the BLAC-RAC over the yoke aligning the two holes on the yoke with the mounting hole and slot of the BLAC-RAC.

[4] Apply threadlocking fluid to the bolts and insert through the hole and slot and into the double nut. Forward pressure may need to be applied to the BLAC-RAC to allow the alignment of the holes. Torque to 15 - 20 foot pounds.

[5] Reinstall the security cover.

SECTION 6

Mounting **BLAC-RAC** to T-Channel



CAUTION: The user is responsible for determining the proper installation location, surface type, and that the mounting hardware used can hold the T-Channel and BLAC-RAC securely.

BLAC-RAC Manufacturing, Inc. accepts no liability of any kind or extends any warranty for any type to user defined and installed mounting schemes or materials used in mounting the product to any surface whether stationary or mobile.

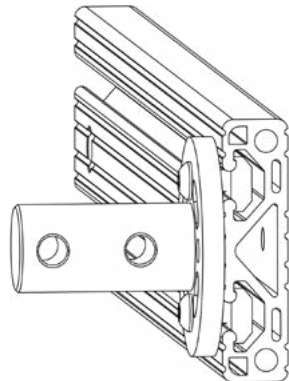
[1] Place and apply thread locking fluid to the two yoke bolts through the holes on the yoke and loosely attach the t-nuts. Slide the yoke into the slots of the T-Channel and remember you can orient the Yoke 360°. Select the orientation that fits your application. Torque to 7 - 10 foot pounds.

[2] Place the yoke vibration pad followed by the yoke security cover over the yoke.

[3] Place the BLAC-RAC over the yoke aligning the two holes on the yoke with the mounting hole and slot of the BLAC-RAC.

[4] Apply threadlocking fluid to the bolts and insert through the hole and slot and into the double nut. Forward pressure may need to be applied to the BLAC-RAC to allow the alignment of the holes. Torque to 15 - 20 foot pounds.

[5] Reinstall the security cover.



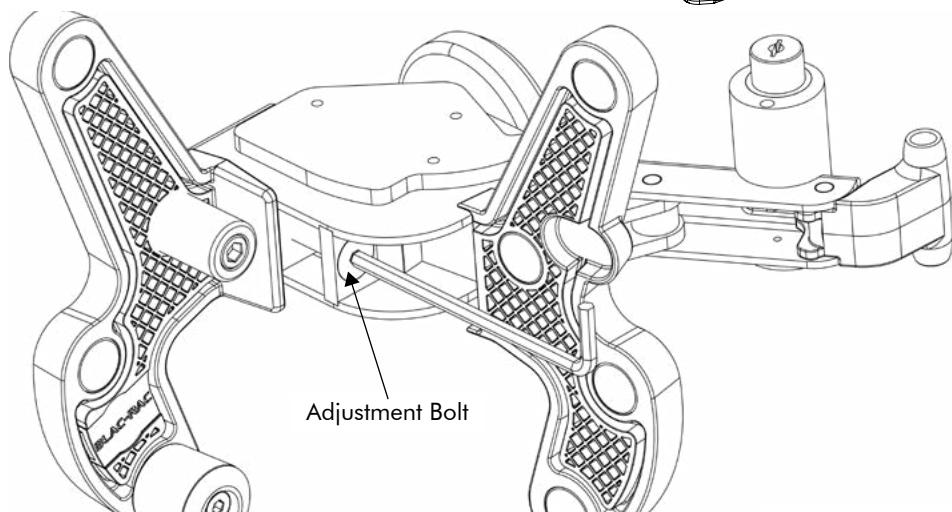
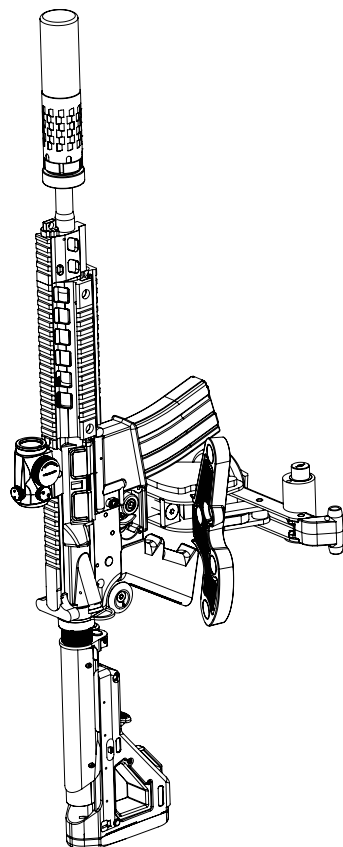
SECTION 7

Adjustment of Breech Width

The Breech Adjustment is used to adjust the width and/or pressure of the BLAC-RAC, depending on the receiver width of the firearm being secured. The BLAC-RAC will accommodate most weapon's platforms in use by law enforcement today.

[1] In the open position, place your firearm into the grip pad as shown.

[2] Close the BLAC-RAC using the handle until it engages the firearm. When closing the handle, the user should feel some resistance upon closing for maximum security and stability. Continue to adjust the breech adjustment until the firearm does not move or shift in the device. If the clamping action is too loose or tight, or does not engage the firearm, adjust the bolt as shown. Clockwise to increase clamp pressure and counter clockwise to decrease clamp pressure.



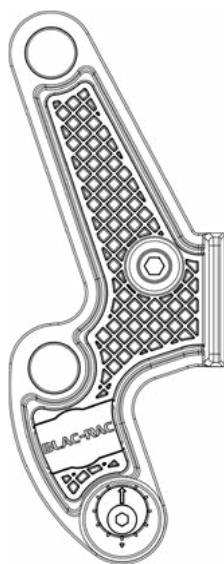
SECTION 8

Adjustment of Eccentric Pistol Grip Rest

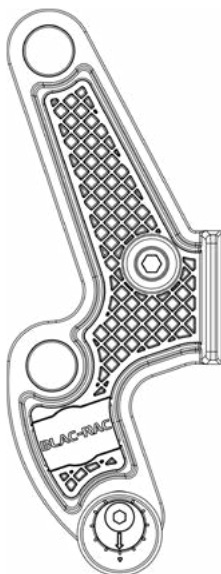
All BLAC-RAC models come equipped with the Eccentric Pistol Grip Rest. This feature provides greater flexibility for positioning the weapon in the BLAC-RAC when using third party grip sets that differ from the standard mil-spec grips that come from many manufacturers of M4's & AR15 equivalents.

The function of the Eccentric Pistol Grip Rest is the ability to adjust the "length of pull" from the trigger guard to the back of the pistol grip. This useful functionality allows your customized weapon to always "sit" properly within the rack.

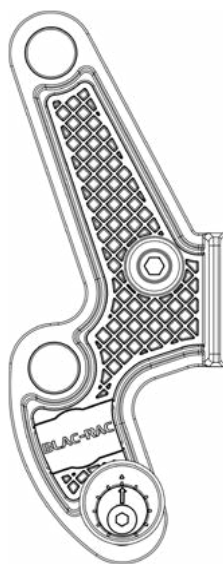
The Eccentric Pistol Grip Rest is shown below in various configurations.



For mil-spec grips the arrow is facing up with the thinnest part of the outer shell facing up towards the trigger post.



When using large third party grip sets, the Eccentric Pistol Grip Rest should be adjusted with the arrow facing down, for maximum length of pull distance.



In this picture, the grip rest is set to the shortest length of pull. The arrow is facing up to the trigger post and the thickest portion of the outer shell is up towards the trigger post.

The Eccentric Pistol Grip Rest is field adjustable. In most cases, it only requires adjusting the outer shell by hand. If you need to modify the arrow direction, use the 5/32" allen wrench and remove the grip rest. Reposition it where desired. Please note the "star" pattern for location of the grip rest into the pads.

SECTION 9

Trigger Guard Installation

Use of the BLAC-RAC ALTA Trigger Guard is required for optimal security. Trigger guard **MUST** be installed with both roll pins on M4 style lowers with removable trigger guards.

The BLAC-RAC ALTA trigger guard replacement allows the user to enjoy all the benefits of the BLAC-RAC system while significantly improving the security of the system.

Below are steps required to ensure your weapon is safe and secure in the BLAC-RAC.

WARNING BEFORE STARTING, MAKE SURE THE WEAPON IS UNLOADED, THE CHAMBER IS EMPTY AND THE SAFETY IS ENGAGED. ALWAYS OBSERVE SAFE FIREARM HANDLING AT ALL TIMES.

Tools Required:

- 1/8" Punch
- Small Hammer
- Electric Drill
- No. 30 (.128") Drill Bit
- ALTA Trigger Guard Kit



[1] Remove the current trigger guard using the 1/8" punch; depress the front detent spring and rotate the trigger guard down, clear of the receiver. Using the same punch, drive out the rear roll pin for use in the re-installation of the replacement trigger guard.



SECTION 9

Trigger Guard Installation

[2] Installation of the replacement guard requires you to support the underside of the trigger guard, carefully drive in the rear roll pin using the 1/8" punch. Verify the hole alignment is correct before proceeding.



[3] Align the front hole of the trigger guard with the existing hole in the receiver. Using the No. 30 drill bit, drill through the entire trigger guard hole until the drill bit passes through the bottom side of the receiver. Make sure the trigger guard holes align. This will ensure a straight hole from top to bottom.



[4] While supporting the underside of the trigger guard, carefully drive in the front roll pin using the 1/8" punch. Verify the hole alignment is correct before proceeding. Roll pin should be equally flush on both sides of the weapon.

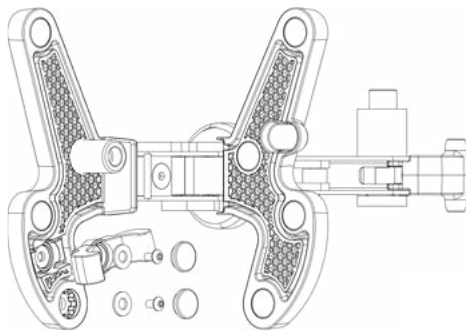
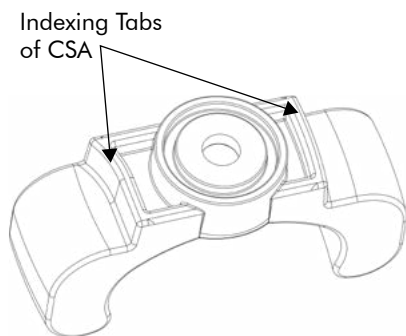
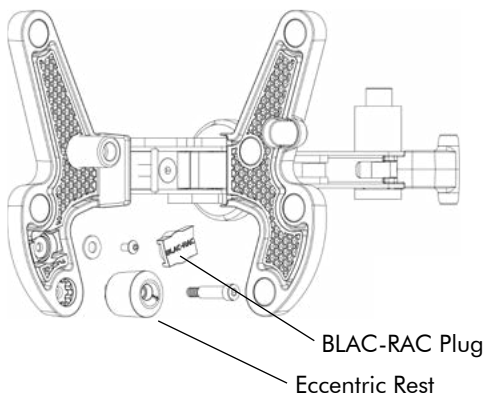
SECTION 10

Conventional Stock Adapter [CSA] Installation

[1] Remove the small plug marked with BLAC-RAC and the Eccentric Pistol Grip Rest.

[2] Remove the screw and washer behind the BLAC-RAC marked plug.

[3] Place the CSA in the cavity left by the BLAC-RAC marked plug, using the indexing tabs for proper fit.



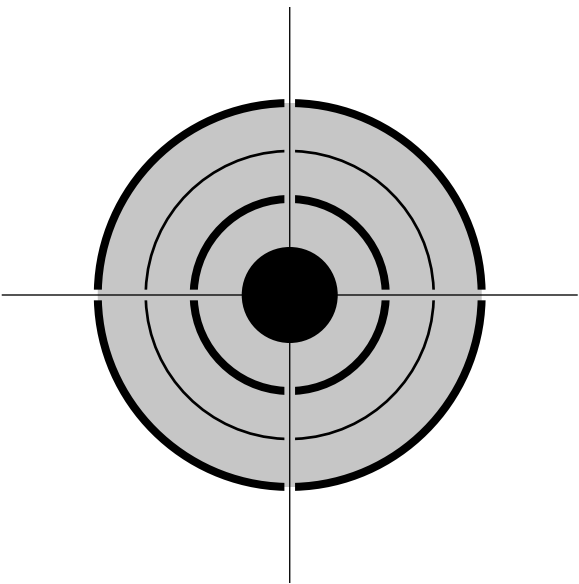
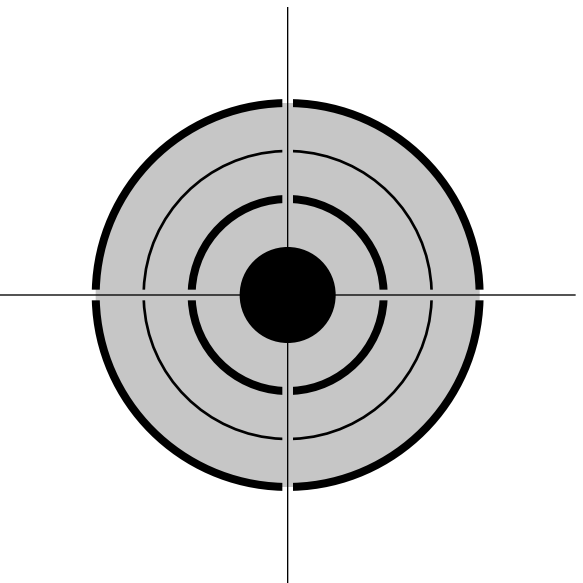
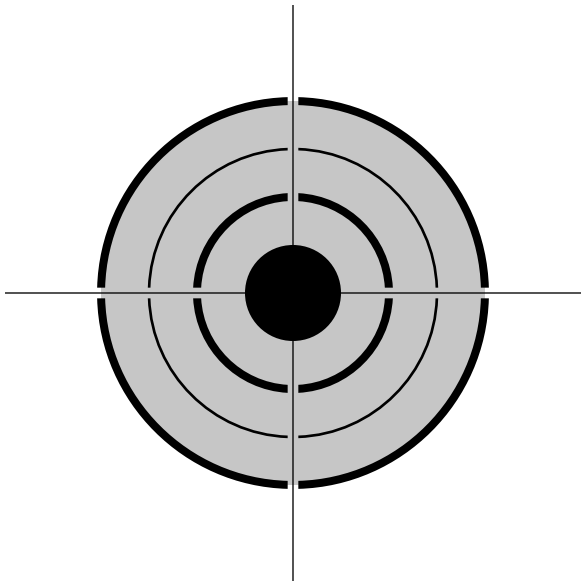
[4] Install the washer and screw into the CSA. Insert CSA rubber cap over top screw to prevent marring of weapon finish.

[5] Install the extra screw, washer, and rubber cap into the Eccentric Pistol Grip Rest cavity.

[6] Place your conventional stock weapon into the BLAC-RAC and make adjustments to the Breech Adjustment Bolt to change the width of the clamping action to accommodate the weapon.



WHEN IT'S NOT IN YOUR HANDS
IT'S IN OURS™



2.0" Ø Outer Target
Every Step Reduces Ø 1/2"